

ACE Working Group 2007

*Tools, Techniques, & Practices for Analyzing
Architectures For Software-Intensive Systems*

Architecture from the Systems Engineering Perspective

Hans-Peter Hoffmann, Ph.D
Chief Systems Methodologist

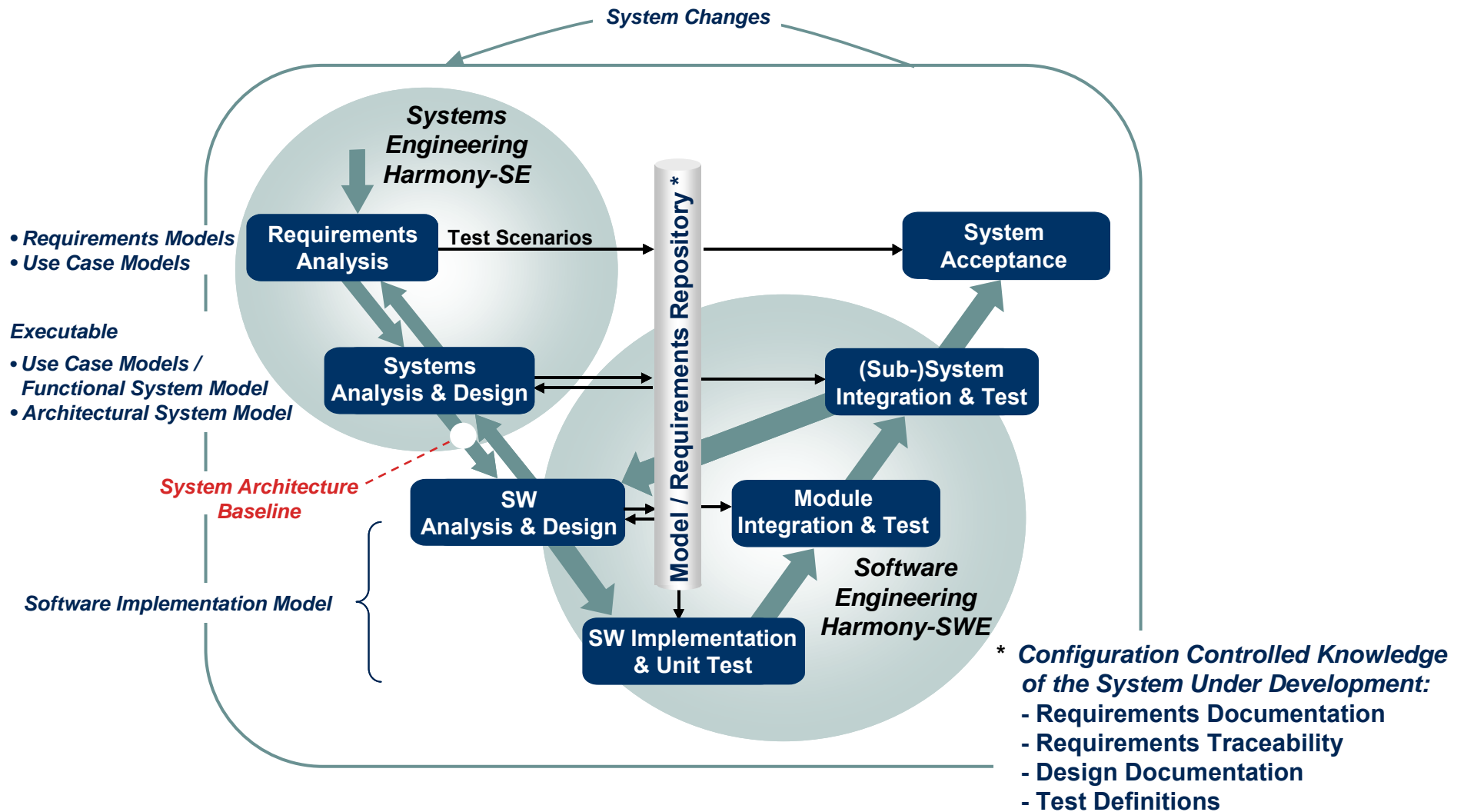


Modeling Solutions Product Division

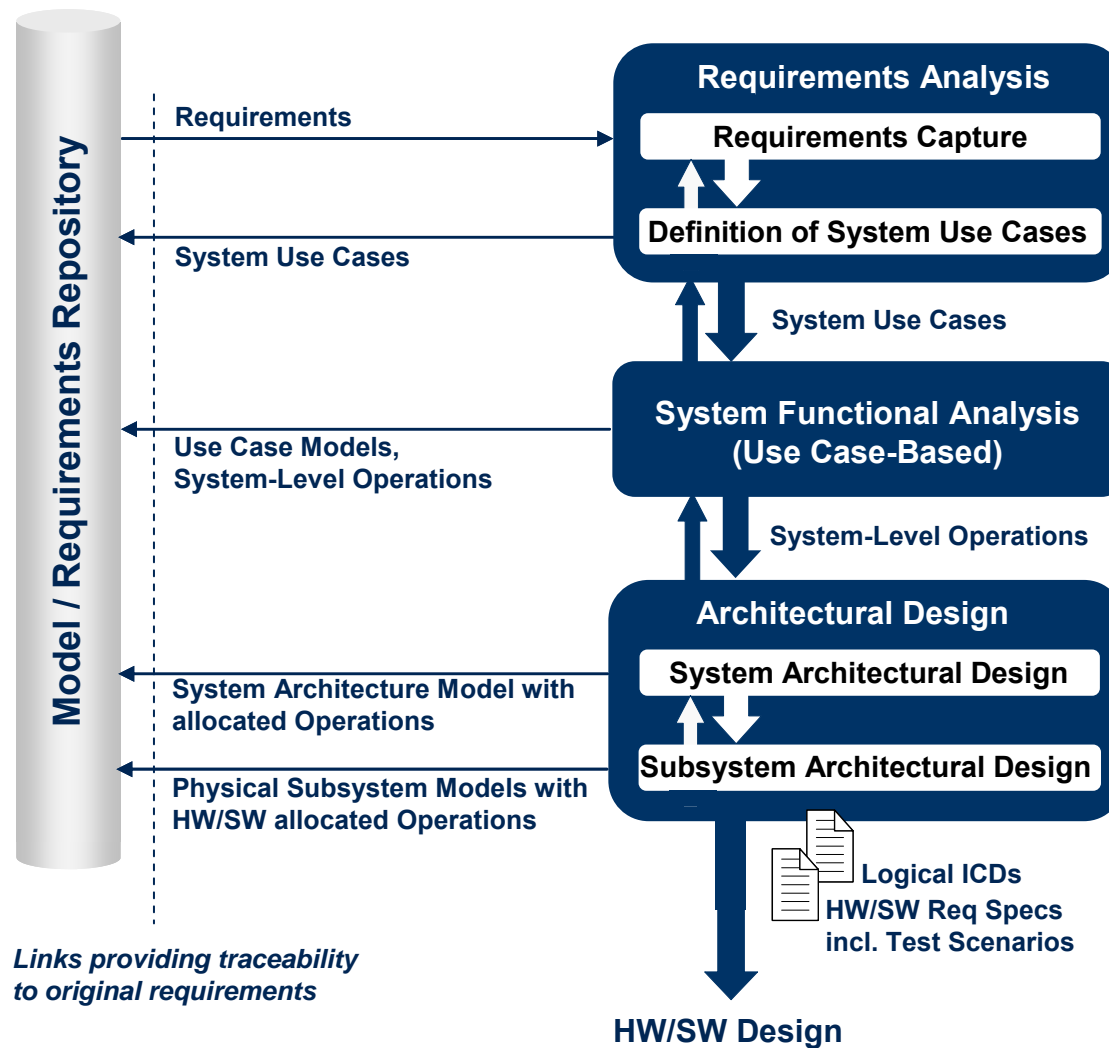
peter.hoffmann@telelogic.com

Model-Driven Development of Embedded Systems

Integrated Systems / Software Development Process *Harmony*



SysML-Based Systems Engineering (*Harmony-SE*)



SysML Artifacts

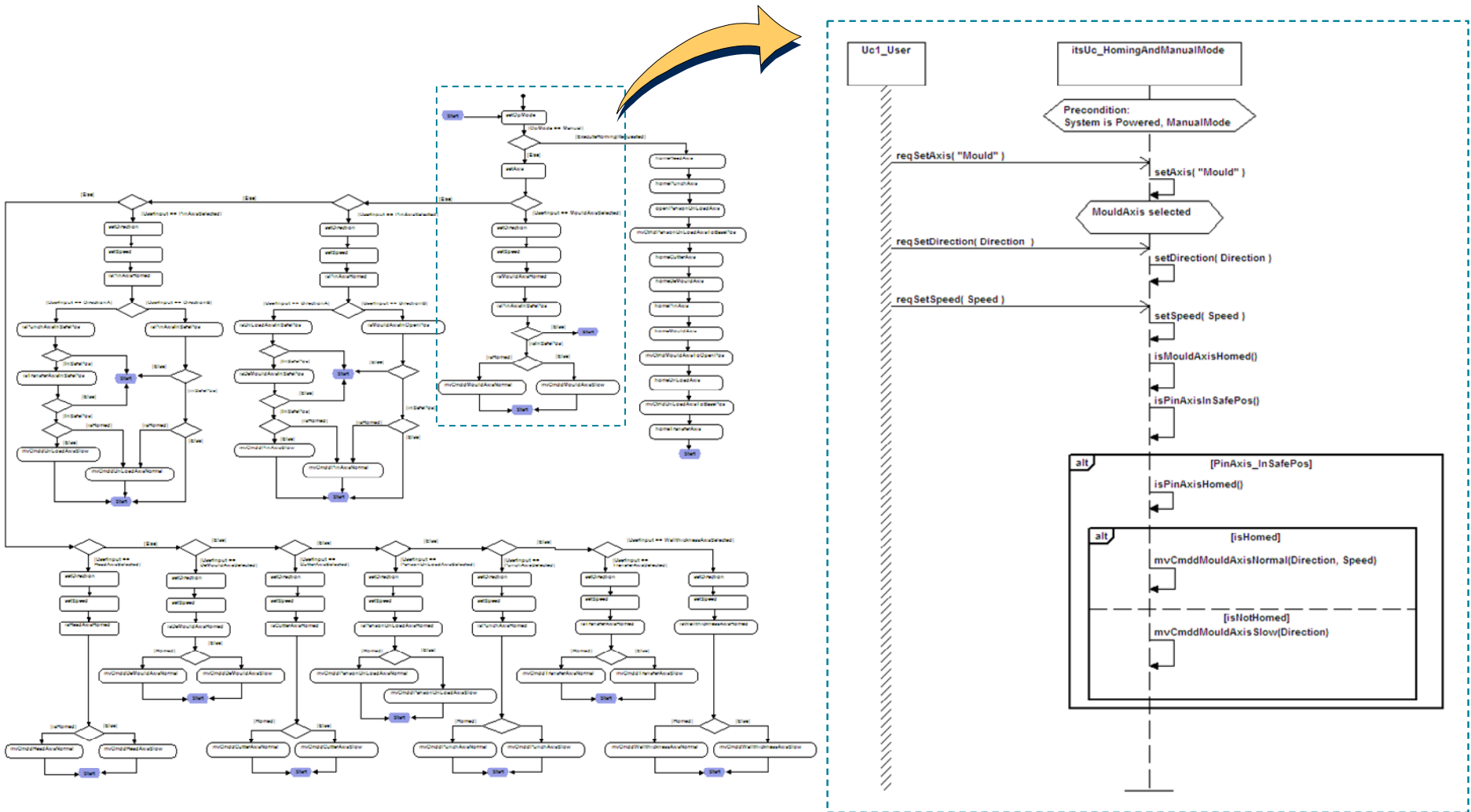
- Requirements Diagram(s) (optionally)
- Use Case Diagram(s)

Per Use Case:

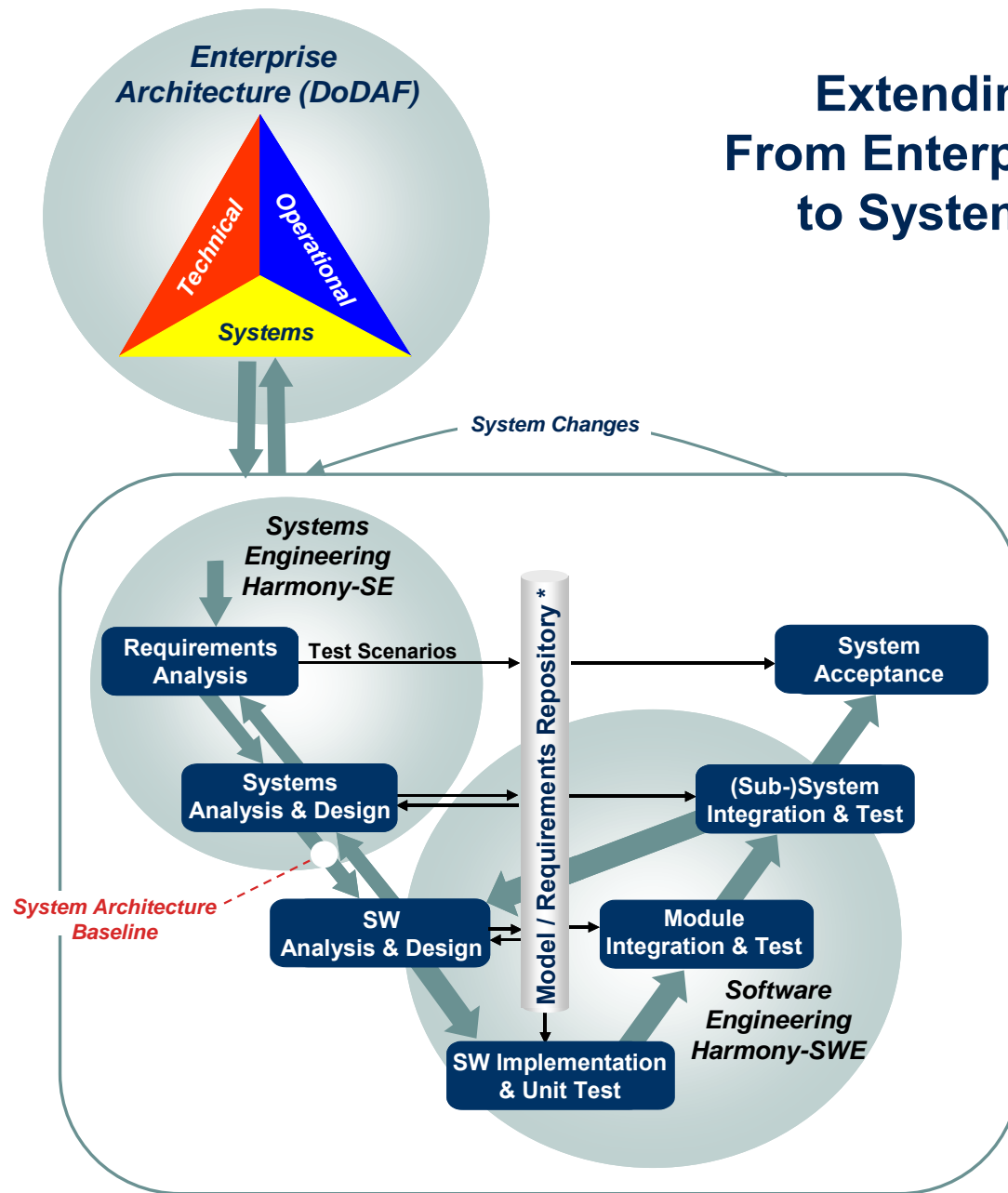
- Activity Diagram (*Black-Box*)
- Sequence Diagrams (*Black-Box*)
- Use Case Structure Diagram (BDD, IBD) with Ports and Interfaces
- Statechart Diagram
- UC Activity Diagrams (*White-Box*)
- UC Sequence Diagrams (*White-Box*)
- System Structure Diagram (BDD, IBD) with Ports and Interfaces
- Subsystem(s)/Subsystem Component(s) Statechart Diagram

Harmony-SE: System Functional Analysis

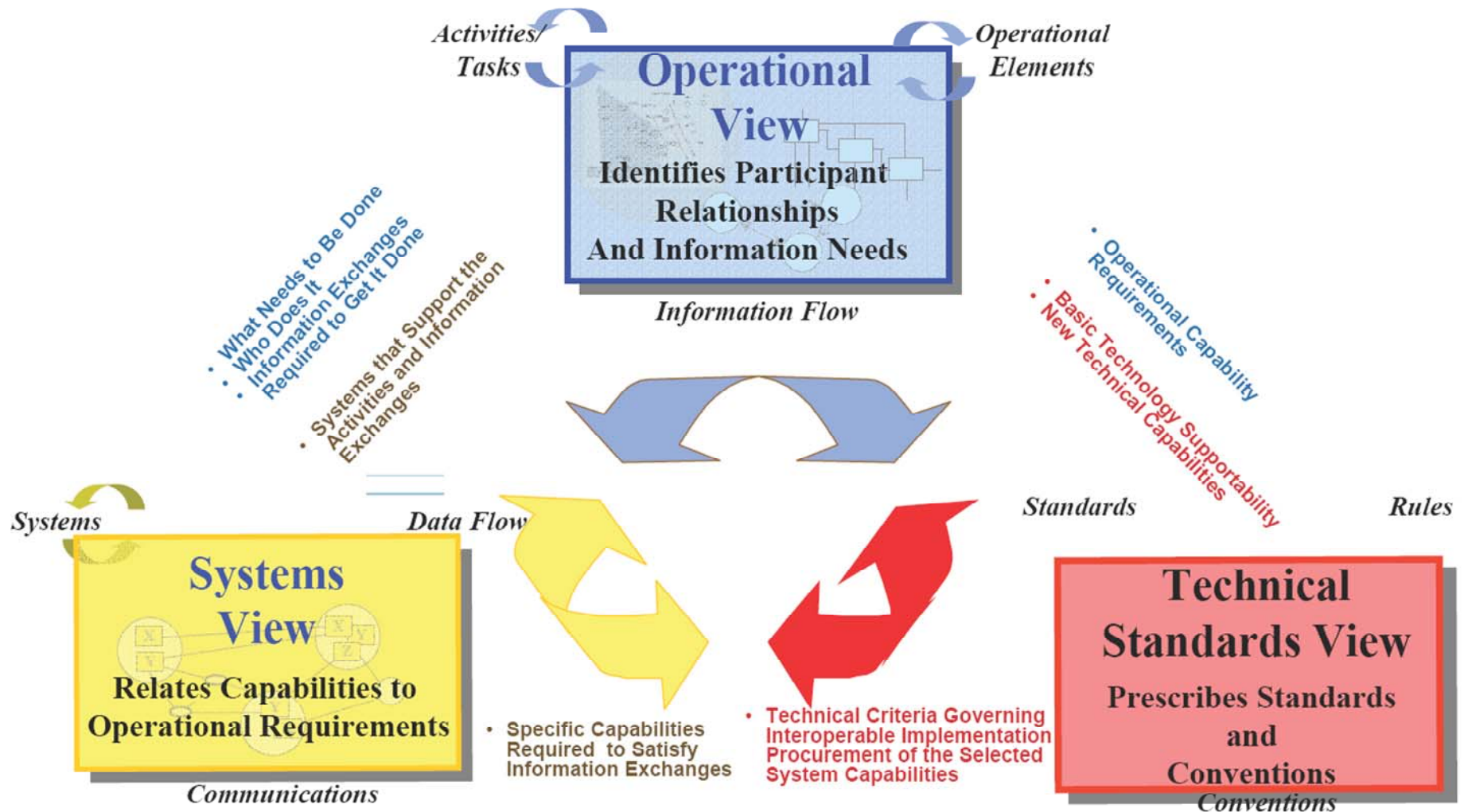
Derivation of Use Case Scenarios from a UC Black-Box Activity Diagram



Extending the Scope: From Enterprise Architecture to System Architecture



Department of Defense Architecture Framework (DoDAF)



Telelogic MDD Tools

