

Conceptual Model for Enterprise Governance

Walter L Wilson



Enterprise Governance Agenda

- Define the Enterprise and Architecture
- Define a Ground Station as an Enterprise Business Process
- Define Enterprise Governance
- Define Levels and Types of Enterprise Governance
- Introduce Governance Model
- Define effects of Enterprise Engineering

The Enterprise

- A *system* engineered to achieve organization goals such as defense, commerce, education, etc, in the most cost effective, efficient, and responsive manner
- Embodied in its enterprise architecture
 - Provides a strategic context for the management of the Enterprise lifecycle

Levels of Abstraction

Enterprise

- Domain
- Capability
- System
 - *Family of Systems*
 - *System of Systems*
- Resource

Conceive

Develop

Deploy

Sustain



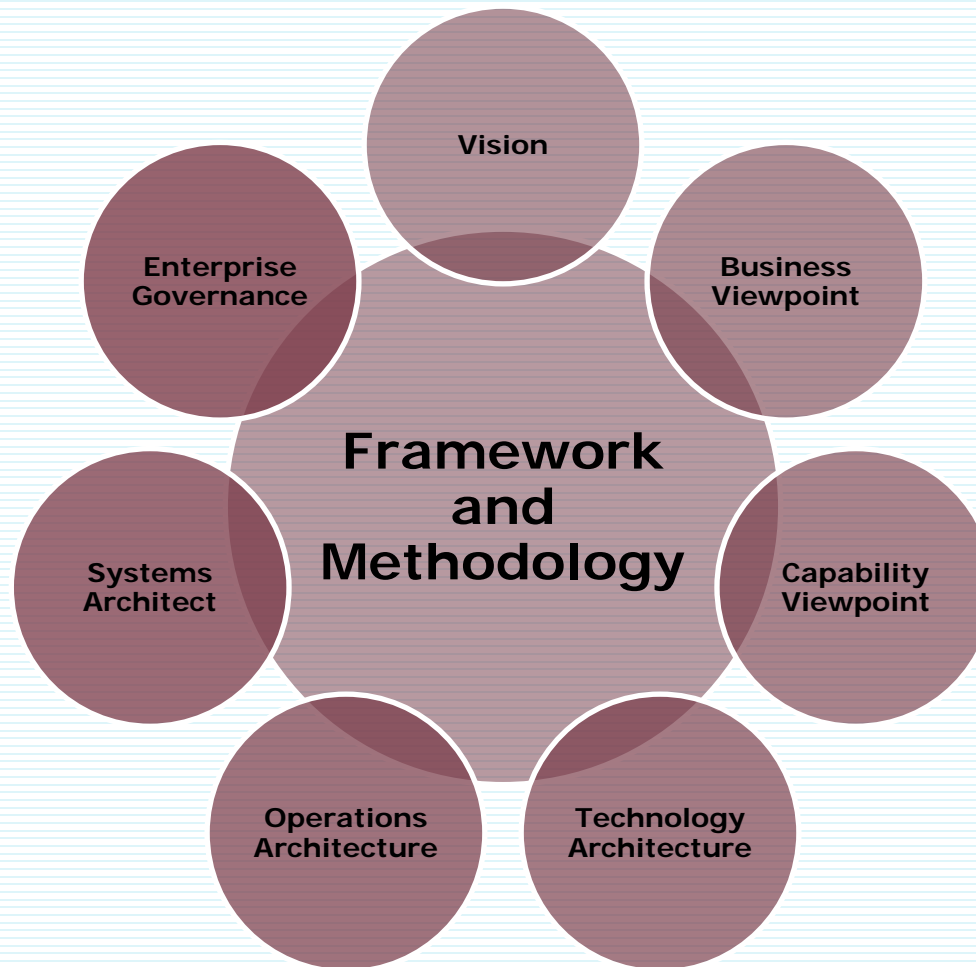
Design

Test

Operate

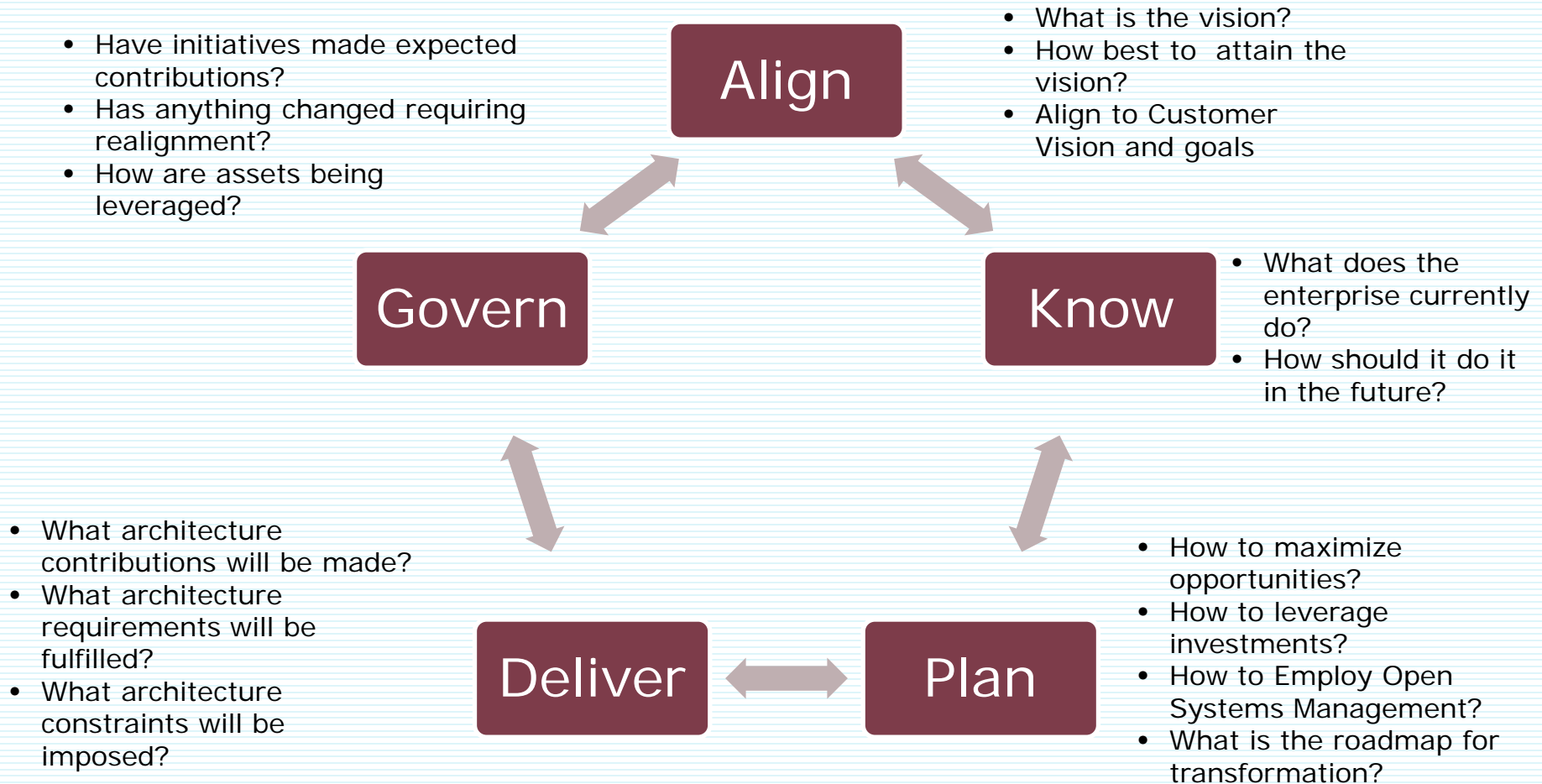
Retire

Enterprise Architecture Methodology





Enterprise Architecture Transformation Tool

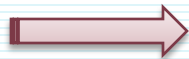


Enterprise Engineering Benefits

□ Key Enterprise Governance Attributes

■ Scalability

- Ability to **scale in magnitude** rapidly in response to changing requirements



■ Adaptability

- Ability to **respond** rapidly to changing requirements

■ Flexibility

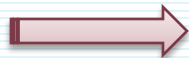
- Ability to **adjust** rapidly to changing requirements

■ Interoperable

- Ability to **interoperate** seamlessly

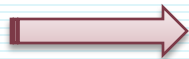
■ Entrepreneurial

- Ability to **respond rapidly to opportunities**



■ Traceability

- The ability to **chronologically interrelate** uniquely identifiable entities



■ Optimization

- The ability to **continually improve** the efficiency of processes

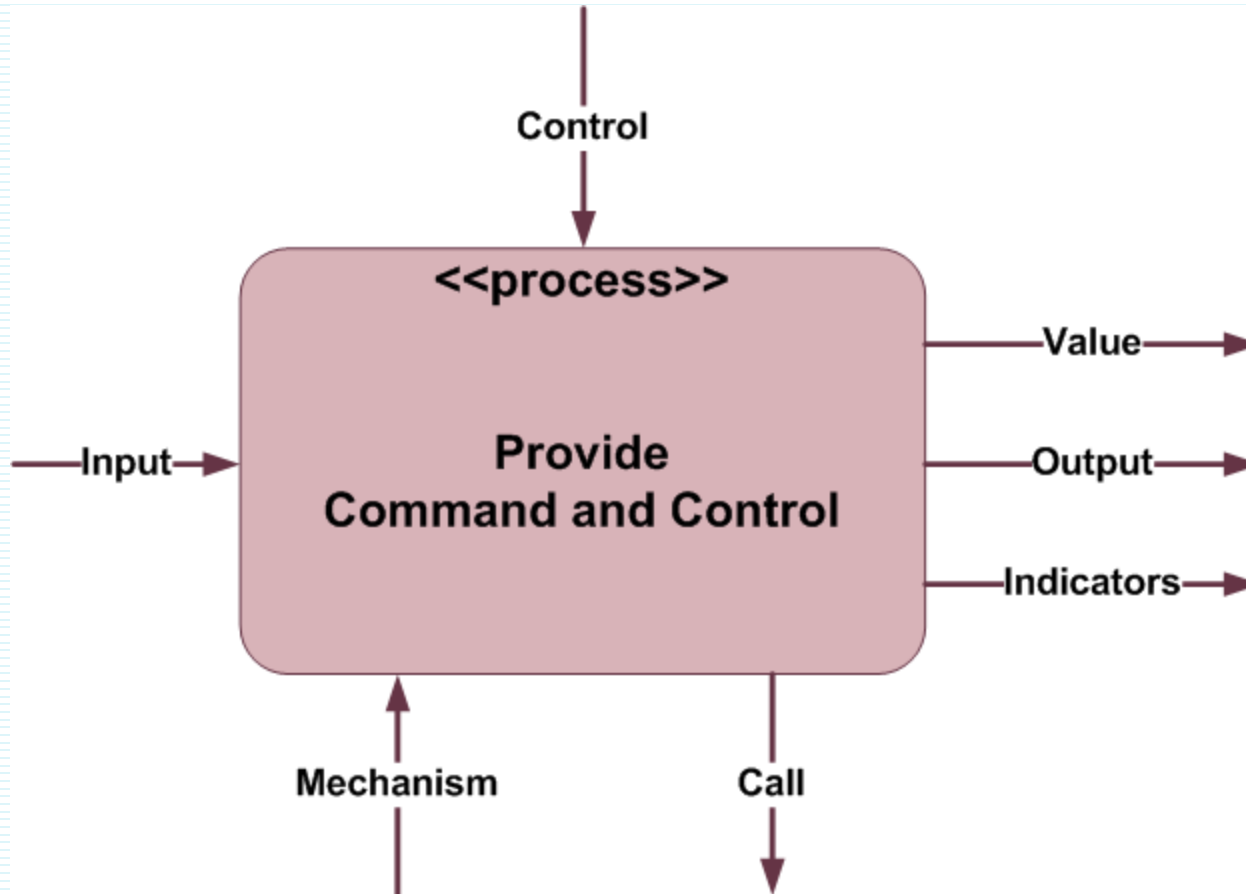


■ Responsive

- The ability to **perform any of the above effects within a compressed or stated timeline**

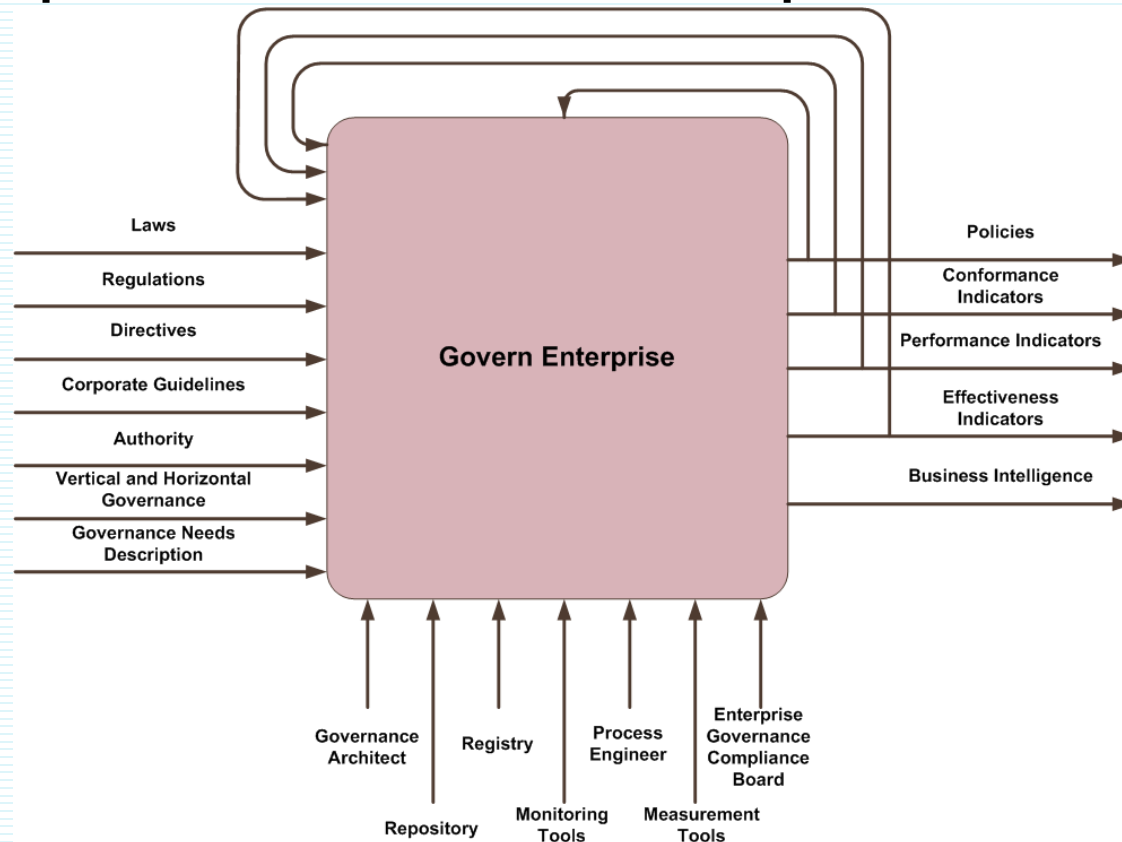
The Business System

□ Provide Command and Control



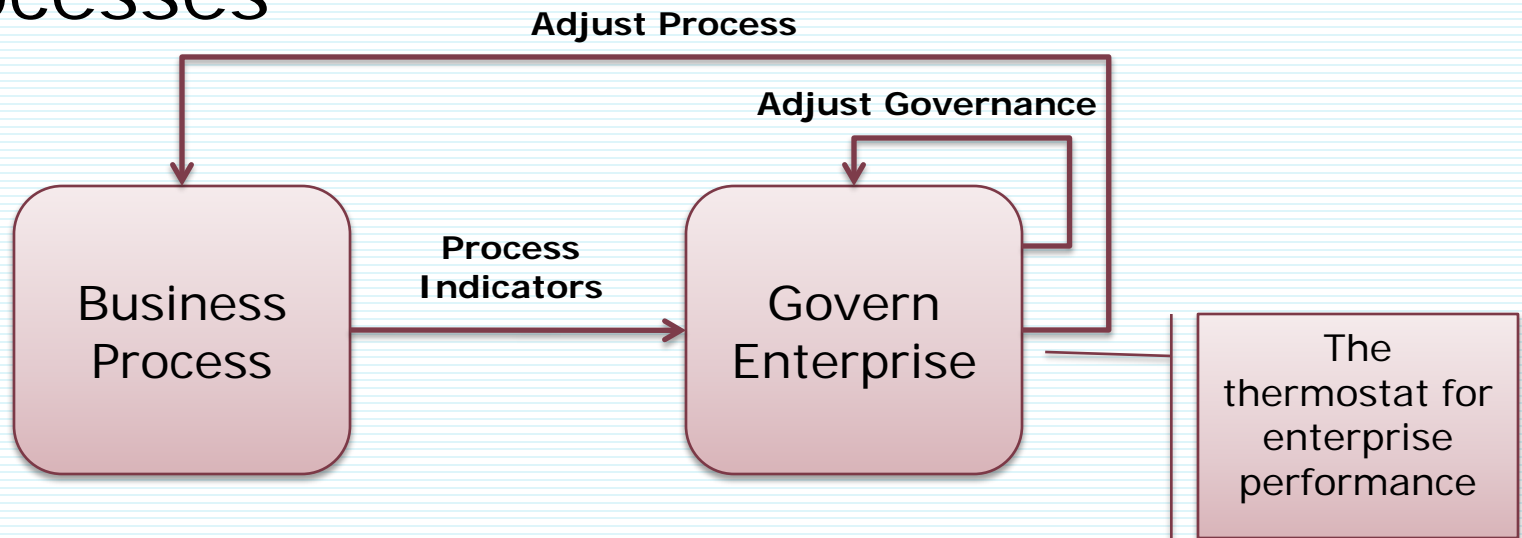
Enterprise Governance

- The assurance mechanism for the accomplishment of Enterprise Goals

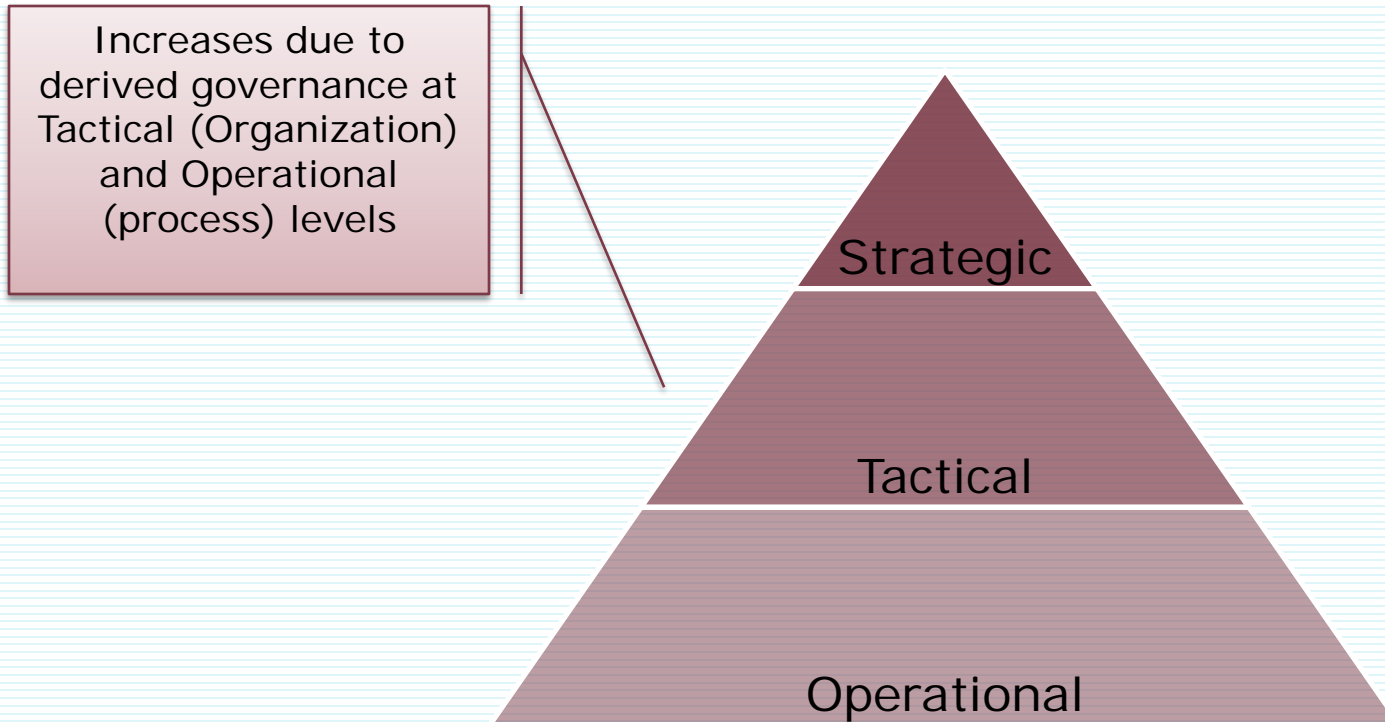


Enterprise Governance Defined

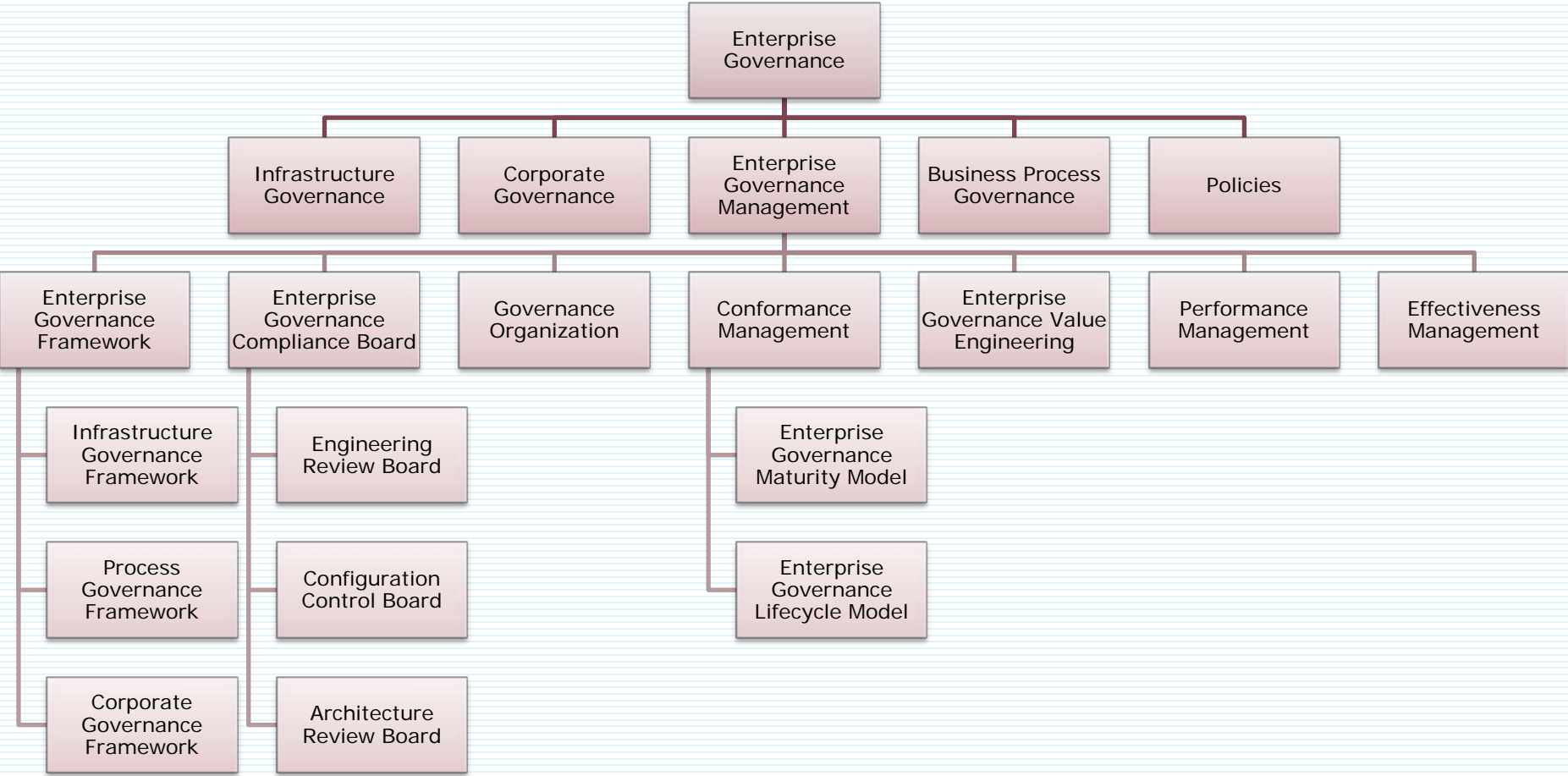
- The structure and relationships which control, direct, or regulate performance of an enterprise, projects, portfolios, infrastructure, processes



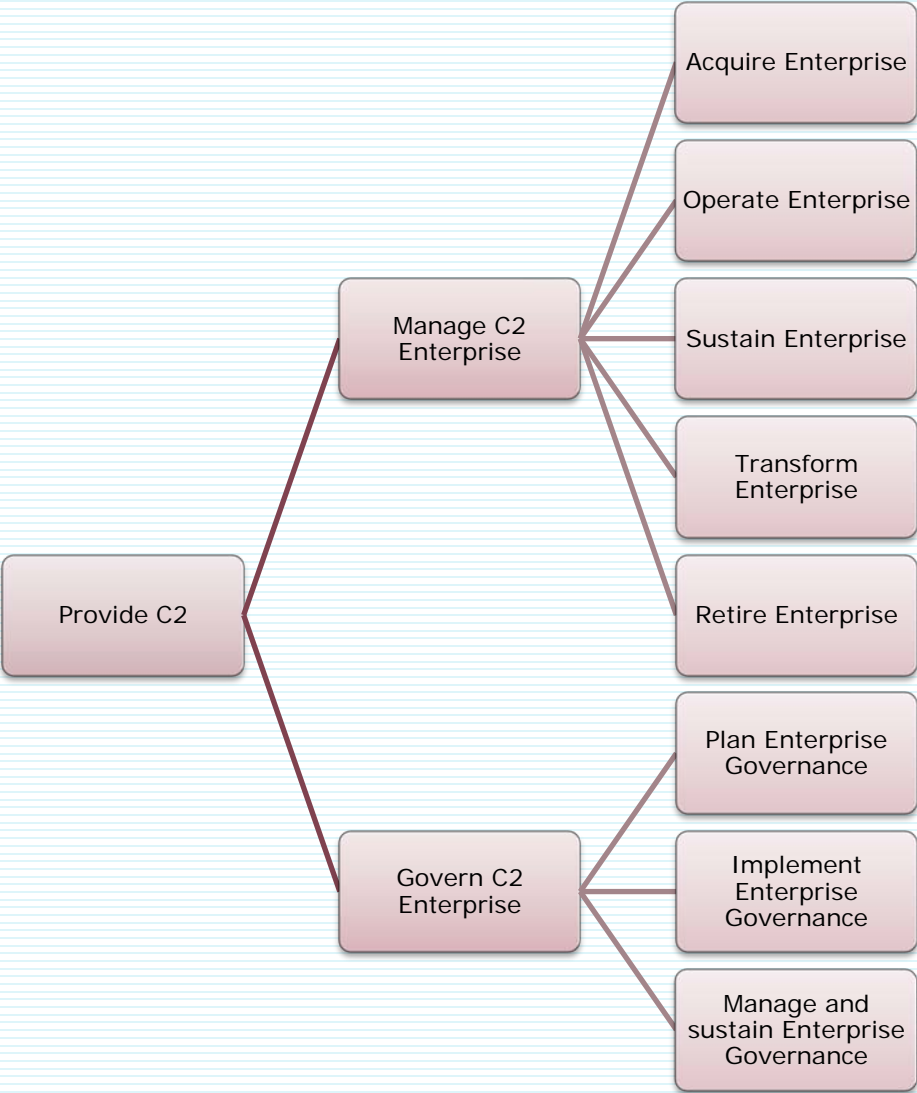
Levels of Enterprise Governance



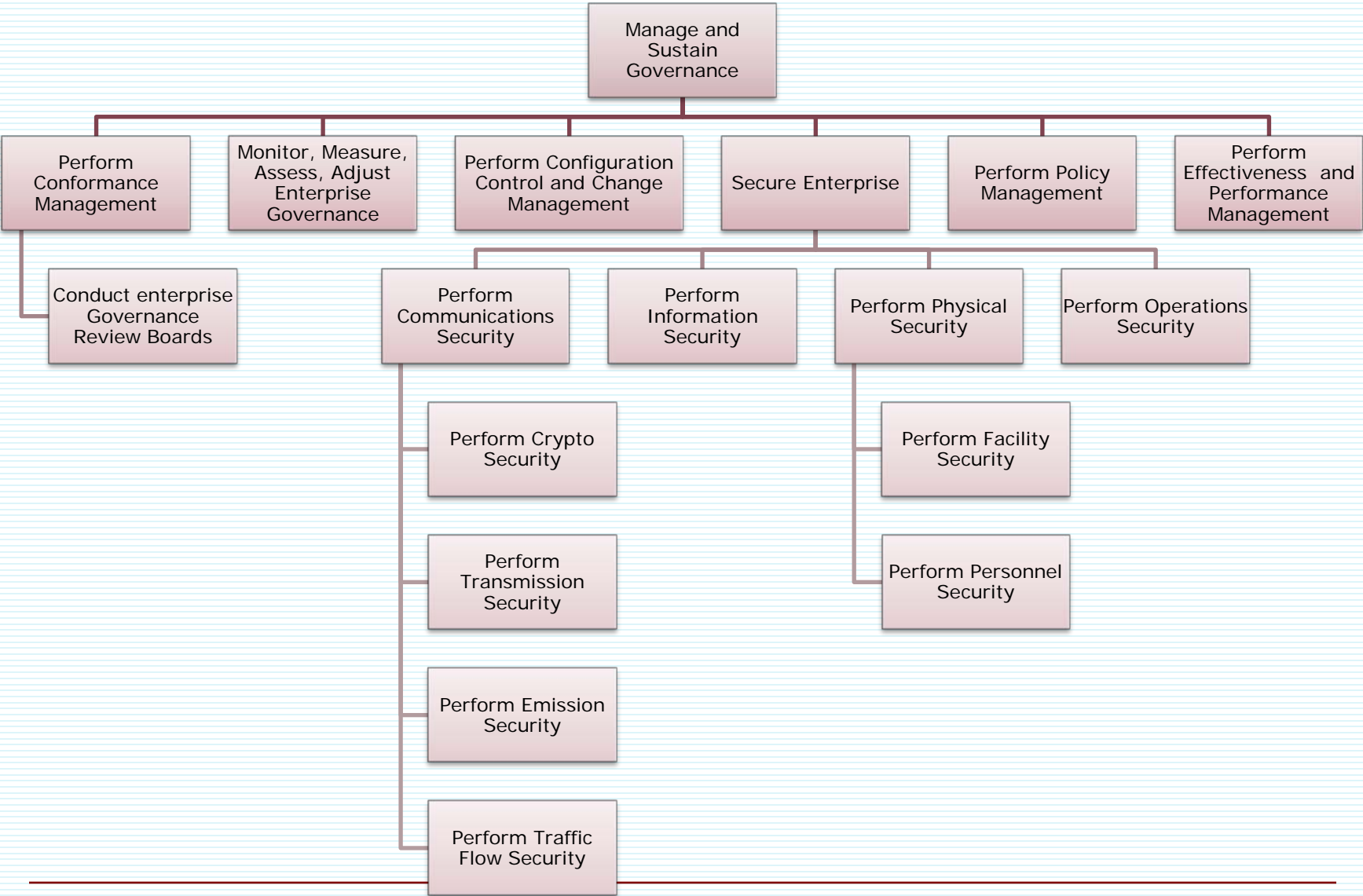
Enterprise Governance Composition Model



Enterprise Governance Process Model



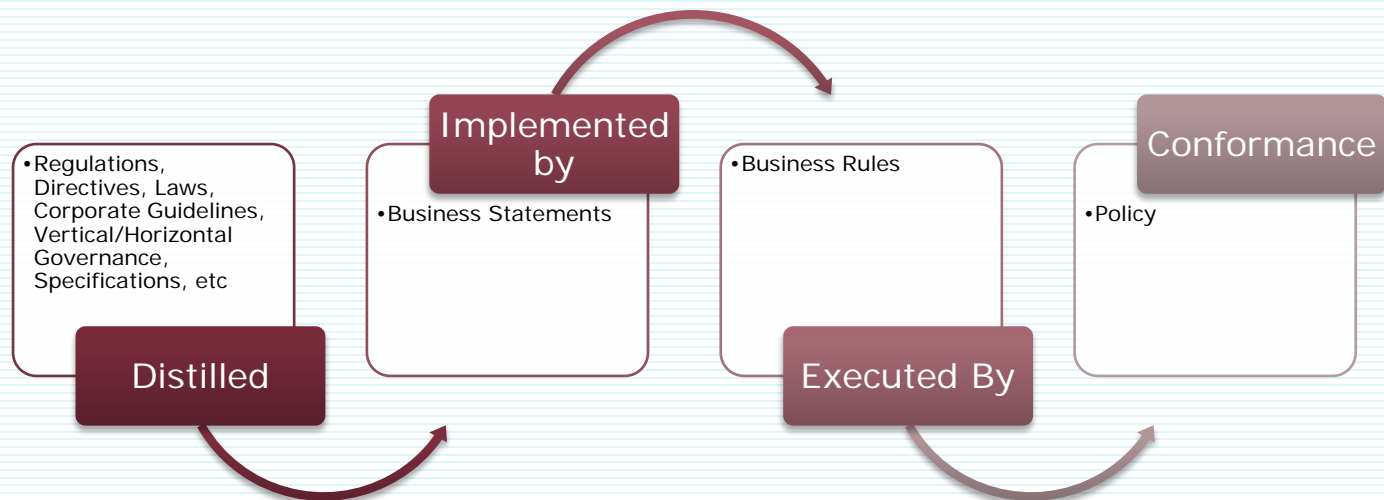
Enterprise Governance Process Model



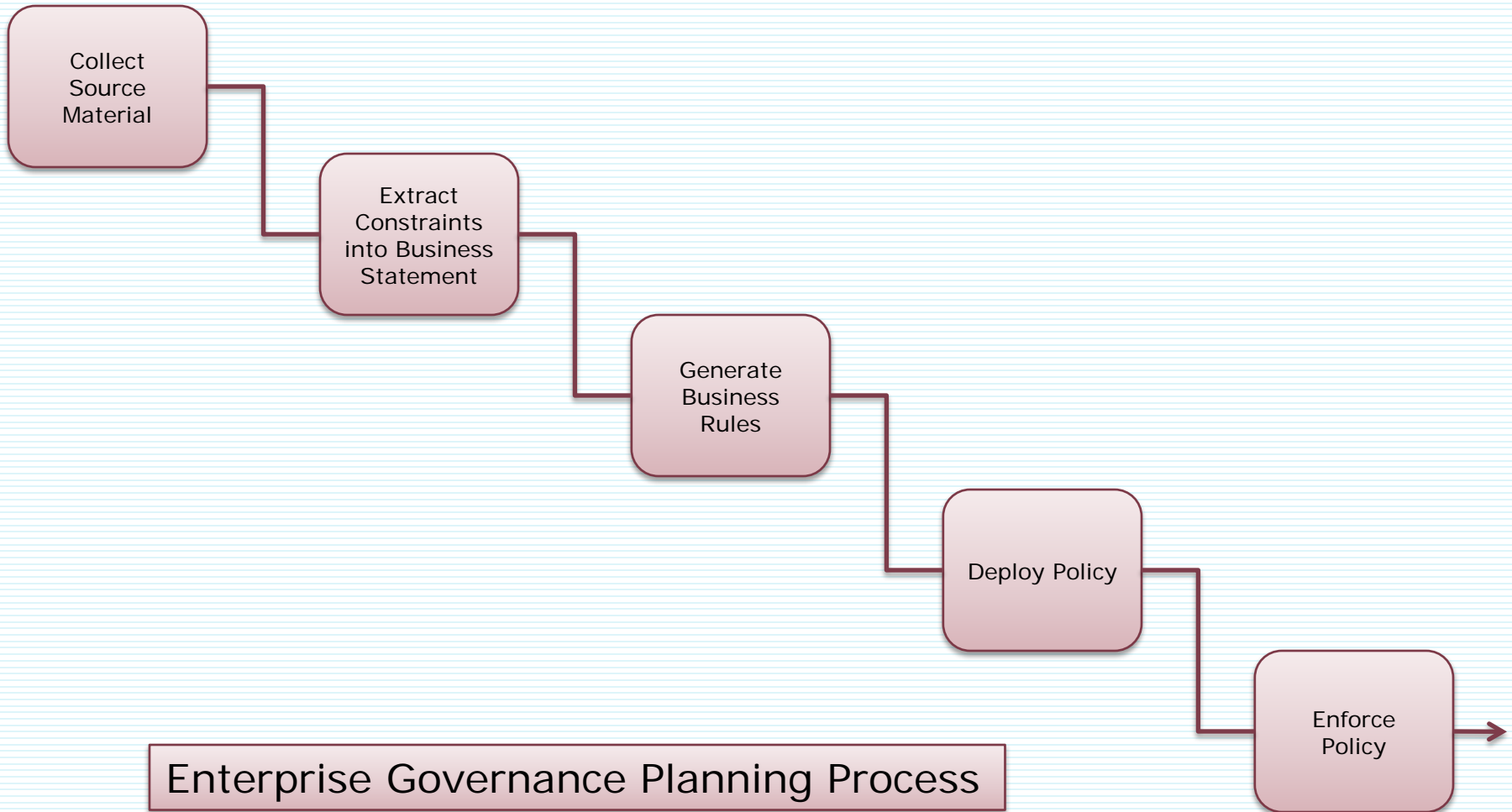
Business Rules

□ Policy

- The implementation and execution of a business rule



Business Rule Planning Process



Business Rule Capture Artifact

□ DoDAF OV-6a example

GUID	Unique ID of Rule (should employ namespace methodology)
Name	The name of the business rule
Description	Short description of business rule
Source	Source of business rule
Rule Type	01 = RULE OF ENGAGEMENT, classified as RULE OF ENGAGEMENT 02 = DATABASE RULE, classified as DATABASE RULE 03 = ARCHITECTURE RULE, classified as ARCHITECTURE RULE 04 = CRITERION, classified as CRITERION 05 = STRUCTURAL ASSERTION RULE, classified as STRUCTURAL ASSERTION RULE 06 = ACTION ASSERTION RULE, classified as ACTION ASSERTION RULE 07 = INTEGRITY RULE, classified as INTEGRITY RULE 08 = AUTHORIZATION, classified as AUTHORIZATION 09 = DERIVATION, classified as DERIVATION 98 = NOT SPECIFIED, classified as OPERATIONAL RULE CATEGORY NOT SPECIFIED 99 = NOT KNOWN, classified as OPERATIONAL RULE CATEGORY-NOT KNOWN
Assertion Rule	Representation of the business rule as an ACTION-ASSERTION-RULE
Action Assertion Rule Condition	The condition with child element description, and a related condition assignment
Structural Assertion Rule	Representation of the business rule as a structural assertion
Where Applied	Processes where policy is to be applied
Measurement	How conformance will be measured

Summary

□ Key Enterprise Governance Benefits

- ➔ ■ *Responsiveness* – leading and lagging indicators allow for predictive and non-predictive analysis (supports Performance Based Logistics)
- ➔ ■ *Adaptability* – indicators allow actions to be taken to adjust responsively to changing requirements
- ➔ ■ *Traceability* – indicators and value allow determinations to be made on conformance, performance and effectiveness
- ➔ ■ *Optimization* – indicators allow constant monitoring and adjustment for process efficiency

Points of Contact

□ Walter L Wilson

■ 805.354.2897 walter.l.wilson@lmco.com

□ Brae Irwin

■ 805.730.1544 brae.j.irwin@lmco.com

□ Sunil Malik

■ 805.530.1102 sunil.malik@lmco.com

□ Brett Gladwell

■ 805.550.2283 brett.gladwell@lmco.com

References

- ❑ Introduction to Business Rules, The Business Rules Group, 2001
- ❑ UML, The Object Management Group, 2009
- ❑ Architecture Governance, The Open Group, 2009
- ❑ Enterprise Architecture Tools, Institute for Enterprise Architecture Developments, 2009
- ❑ Department of Defense Architecture Framework, version 1.5, April 2007

BACKUP SLIDES

Enterprise Governance Process Model

